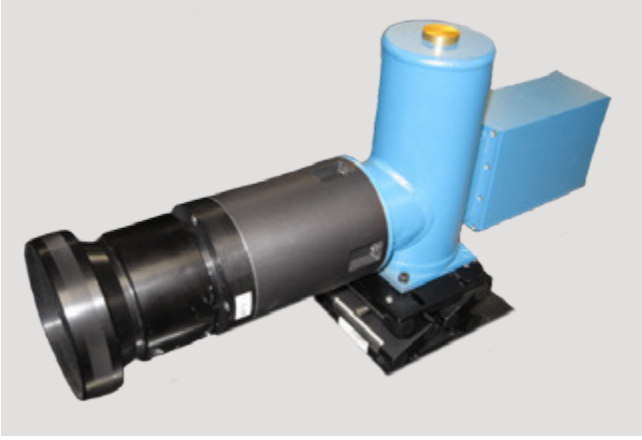


# Indus MWIR



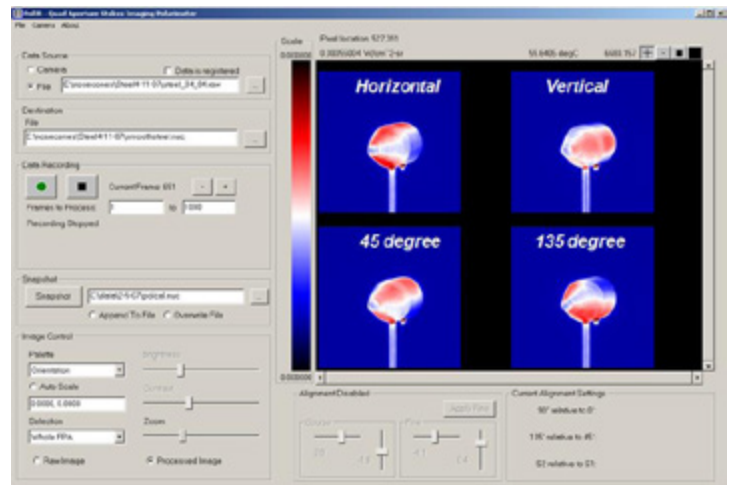
Detector	InSb
Waveband	3 $\mu$ m-5 $\mu$ m
Pixel Pitch	24 $\mu$ m
Resolution (HxV)	220 x 220 pixels
Standard Lens	100mm EFL
Field of View (Standard Lens)	5° x 5°
Camera Frame Rate	87Hz
Full Frame Pixel Operability	>99.8%
NETD @ f/3	23mK
NEDOLP @ f/3	0.15%
Input Voltage	110V
Size with Standard Lens (LxWxH)	16" x 4" x 8"
Weight with Standard Lens	18lbs
Data Interface	Camera Link

## Summary

- Captures four states of polarization in a single frame time
- A novel lens architecture produces four identical images on the FPA
- Each image can be a different polarization state or waveband
- Architecture based on previously used techniques for multi-wavebands and polarization sensing
- Sensor operates with software to register images and compute a wide range of data products

## Applications

- Multi-spectral or polarimetric sensing applications
- Detecting man-made objects in clutter and during thermal cross-over events
- Remote sensing
- Crop health
- Phenomenology



Captures four states of polarization in a single frame time



200 Westside Square, Suite 320 | Huntsville, Alabama 35801  
 256.562.0087 | info@PolarisSensor.com | www.PolarisSensor.com  
 © 2016 Polaris Sensor Technologies, Inc.