

Indus VIS



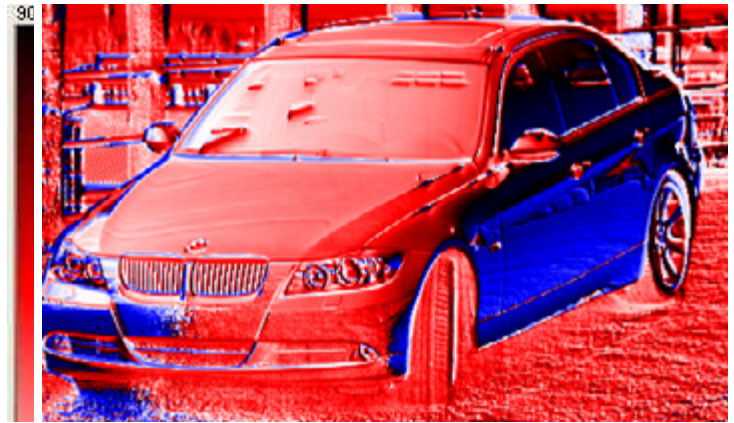
Waveband	0.5 μ m-0.55 μ m
Pixel Pitch	7.4 μ m
Resolution (HxV)	1024 x 1024 pixels
Standard Lens	F-mount Zoom (100-200mm)
Field of View (Standard Lens)	7° x 7° / 3.5° x 3.5°
Camera Frame Rate	60Hz
Input Voltage	120VAC
Size with Standard Lens (LxWxH)	26" x 4" x 4"
Weight with Standard Lens	12lbs
Data Interface	GigE

Summary

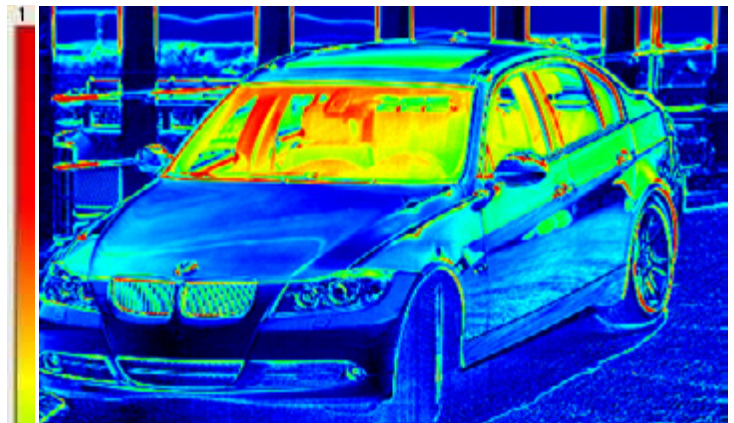
- Facilitates the investigation of polarization in the VIS waveband
- Samples the entrance pupil with four different sub-systems
- Novel fore-optics split the incoming light into four equal channels and then filters it by a linear polarizer at a unique orientation. Aft-optics then re-images the four channels onto the focal plane.
- Simultaneously produces four copies of the object scene on one focal plane facilitating the measurement of the first three elements of the Stokes Vector on a per-pixel basis; namely, radiometric (S0), degree of horizontal polarization (S1), and 45° polarization (S2)
- Ideally suited for viewing the polarization of highly dynamic scenes
- Software puts you in control of the recording.
- Six different recording options, automatic collection over a long period of time (e.g., several diurnals), and manual control (start/stop)
- Software supports full data analysis and imagery export for reporting results
- Supports the investigation of spatial and temporal averaging of select pixels, pixels areas, or a line of pixels

Applications

- Drone detection
- Surface craft detection on water
- Phenomenology



Angle of Polarization can discriminate surface orientation. Note how vertical and horizontal surfaces have much different AoP.



Degree of Linear Polarization can discriminate materials. Note how glass surfaces have much higher DoLP.

Polaris

Sensor Technologies, Inc.

200 Westside Square, Suite 320 | Huntsville, Alabama 35801
256.562.0087 | info@PolarisSensor.com | www.PolarisSensor.com

© 2016 Polaris Sensor Technologies, Inc.