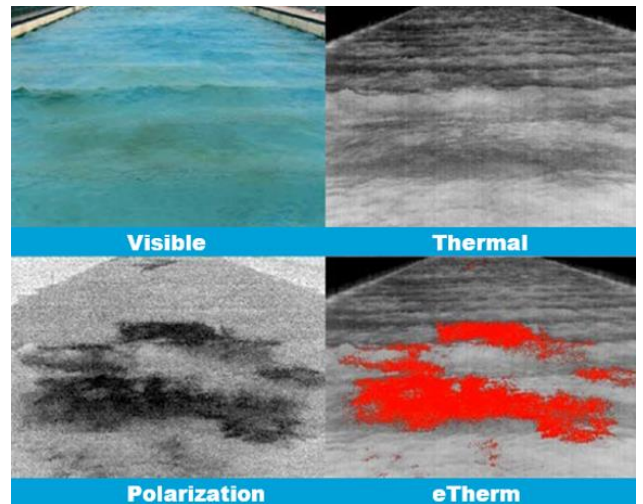




Polarization provides the needed sensitivity for oil on water detection. Thermal plus polarization with a color overlay provides accurate discrimination and detection. The Pyxis is up to 400% more effective at detecting oil and other petrochemicals on water than the competing technology.

Pyxis detects contaminants on water in rough conditions, outperforming any conventional thermal 24/7. Detected contaminants to date include crude oil and diesel. Using the Pyxis Vision Science (PVS) software, the oil appears red which can be configured to set off automatic alarms.



Pyxis LWIR 640

- Industry's smallest polarization enhanced thermal imager
- Up to 400% greater detail and contrast than standard thermal
- Real-time data display and analysis

REAL-TIME Seep and Leak Detection

- Robust detection in a variety of conditions (flat water & no waves)
- Detects recoverable oil (>50 μm thickness)
- Distinguishes oil from seaweed and other debris
- Works both day and night
- Suitable for automated continuous monitoring, detection, and alarm for platforms, mobile sites, fixed sites
- Mitigates specularly reflected light (glint)

200 West Side Square, Suite 320 | Huntsville, Alabama 35801

256.562.0087 | info@PolarisSensor.com | www.PolarisSensor.com



Polaris
Sensor Technologies, Inc.
See More. Know More.®

© 2021 Polaris Sensor Technologies, Inc.